



for October 21, 2020

“I can see
my house from
here!”

New interactive online map aims to streamline film shoots in San Diego

Unveiled last month, the [San Diego Filming Jurisdiction Map](#) allows online scouts to study with granular detail virtually every square foot of San Diego County for scenery needs, location details, photographs and links to Google Street View and the government agencies that issue permits for the location. **Brandy Shimabukuro**, film liaison for the City's of San Diego's Film Office, said that the map has already logged multiple visits from filmmakers overseas.

Find address or place

Home, Refresh, Full Screen, Print, Share

(1 of 3)

Los Penasquitos Canyon County Preserve

County Parks Information

Address	12122 Canyonside Park, San Diego, CA 92129
Type	Open Space Preserve
Contact	Click to View
Google Street View	Click to View

Zoom to

-117.136 32.938 Degrees

See web site for license constraints. | County Assessor | SanGIS, Esri, HERE, Garmin, SafeGraph, METI/NASA, USGS, Bureau of Land Management

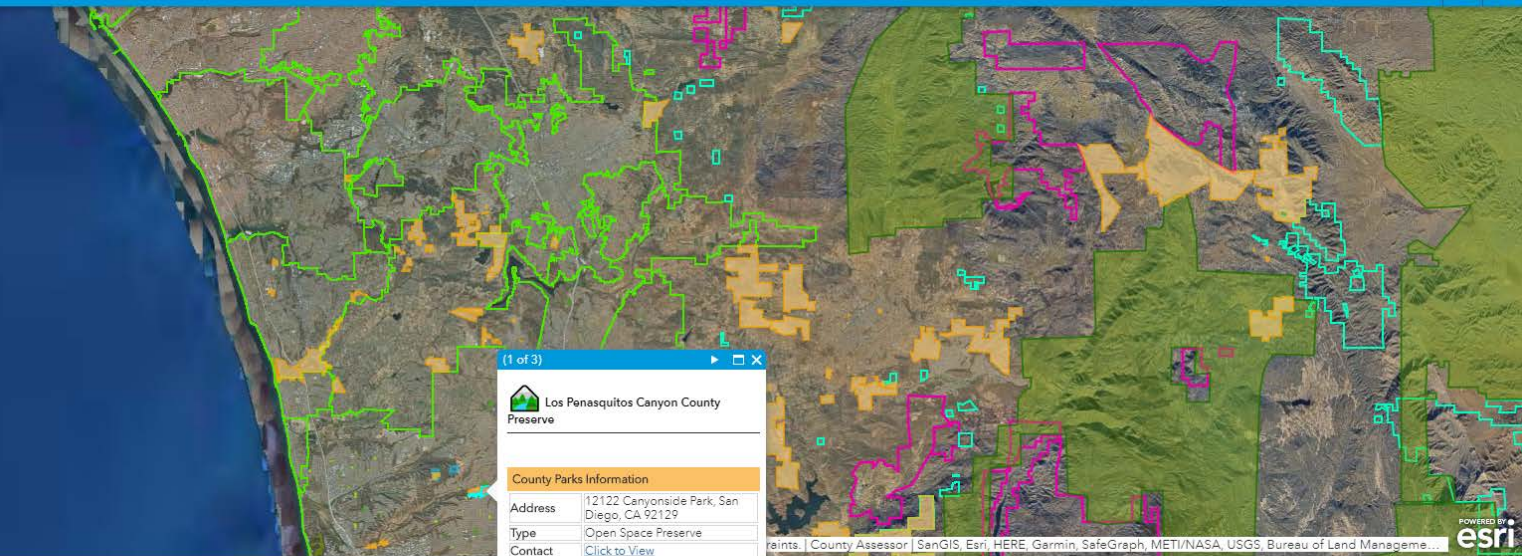


Show all

SD Juris map.jpg

The City of **SAN DIEGO** Filming Jurisdiction Map

Find address or place



(1 of 3)

Los Penasquitos Canyon County Preserve

County Parks Information

Address	12122 Canyonside Park, San Diego, CA 92129
Type	Open Space Preserve
Contact	Click to View

- Parcels
- Port District Dedicated Streets
- City Parks
- County Parks
- State and National Parks
- Bureau of Land Management (BLM)
- Tribal Lands
- Water Agencies
- National Wildlife Refuge Boundaries
- Jurisdictions
- Road Jurisdiction

Options Clear selection

Shape	COMMON_NAM	DESIG_USE	ACRES	ADDRESS_LO	THOMAS_BRO	COMMUNITY_	USE_RESTRI	DEDIC_PARK	FULL_Name	Serv_Dist	Undeve	Playground	Tot_Lot	BaseB_50_6	BaseB_90	SoftBall	MultiPurp	TennisCt
	RHO BERNARDO CP	Community Park	27.04	18448 W Bernardo Drive, 92127	1150A6	RANCHO BERNARDO	DEDIC PK/OS... ORD.	Y	Rancho Bernardo Community Park	40.00	0.00	1.00	0.00	0.00	0.00	8.00	4.00	6.00
	HILLTOP CP	Community Park	33.01	14000 MC ENTEE ST, 92129	1189E2	RANCHO PENASQUITOS	DEDIC PK/OS... ORD.	Y	Hilltop Community Park	40.00	0.00	2.00	0.00	0.00	0.00	0.00	0.00	0.00
	BLACK MTN RCH CP	Community Park	42.94	14700 Carmel Valley Road, 92128	1169D7	BLACK MOUNTAIN RANCH	SEE L1203 ENTRIES	N	Black Mountain Ranch Community Park	40.00	0.00	0.00	0.00	0.00	0.00	4.00	3.00	0.00
	CARMEL MTN	Community Park	18.45	10166 RANCHO	1189H3	CARMEL	SEE L1203	Y	Carmel Mtn.	40.00	0.00	1.00	0.00	0.00	0.00	2.00	1.00	0.00

77 features 0 selected

SD Juris map.jpg

Opinion:

It's awesome to have this tool for the production community. It can help with narrowing down locations. However, it's a site designed by and for the science community (it's powered by ESRI.) This makes the navigation unintuitive and a bit clunky.

Also, I'm not sure if you need to register as an ArcGIS member.

Still, poke around for yourself and see if you can see YOUR house!

<https://sandiego.maps.arcgis.com/apps/webappviewer/index.html?id=3110d53f0e2a48abaedaad2e6a1cd27d>

“Those tears
look so real.”



Bond was the last straw:

Regal and Cineworld will reportedly close all theaters in US and UK

The second largest cinema chain in the US is temporarily closing its doors nationwide. Cineworld, parent company of Regal, announced that it will be suspending operations of its **536 Regal theaters** as of Thursday, October 8. The suspension also affects 127 Cineworld and Picturehouse cinemas in the UK.

Regal has **eight locations** in San Diego County, including theaters in Carlsbad, San Marcos, Escondido, Mira Mesa, La Jolla, El Cajon, Rancho San Diego and Chula Vista.

The straw and camel was the 25th James Bond film **No Time to Die**. The film was pushed back to April 2021 due to the ongoing pandemic. Apparently, theaters were counting on Bond, specifically, to arrive on time and help bail them out of poor ticket sales.

“The play’s the
thing (isn’t it?)”

Actors' Equity and SAG-AFTRA in Stalemate Regarding Streaming Theatre Productions



**ACTORS'
EQUITY**
ASSOCIATION 1913



SAG·AFTRA®

A dispute between two of the nation's largest performing arts unions has created a stalemate over who should represent actors and stage managers for streaming theatrical productions.

At the heart of the issue is whether SAG-AFTRA (Film) or Actors' Equity Association (Theatre) should handle live or digital shows presented on a screen created by a theatre company—and the safety and compensation standards for those involved.

With the mass theatre shutdown in March, streaming has become one of the most artistically and financially viable options for companies. Until theatres can safely open again, the medium will likely remain a dominant way to reach audiences and present work, creating pressure on both sides to come to an agreement soon.

“The king is dead.
Long live the king.”

**Hollywood Faces the Hardest
Truth:
Movies Are No Longer King**

[https://www.indiewire.com/2020/08/
hollywood-movies-no-longer-king-
1234579572/](https://www.indiewire.com/2020/08/hollywood-movies-no-longer-king-1234579572/)

“I feel there’s a barrier
between us.”

The Matthshield Floppy MSE

Durable, optically clear vinyl.

Provides UV protection without becoming brittle.

40" x 40" size fits hatch-back style vehicles.

Folds out to 40" x 80."

Fits standard grip gear.



It's a mini B&H!

At the Staples in Carmel Mountain



Sound, lights, video
and some grip gear!

Ask your peers.



Peerspace is the world's largest marketplace for hourly rentals of unique spaces for events, meetings, photoshoots, and media productions.

Peerspace provides simple booking of over 10,000 venues along with expert event support.

Peerspace locations are currently available in areas including San Francisco, Philadelphia, Dallas, Austin, Silicon Valley, Los Angeles, Seattle, New York, Boston, Chicago, Washington DC, San Diego and Atlanta.

Like AirBnB or VBRO but for productions.



NEWS YOU CAN USE